



SWIFT. SILENT. SECURE.

DRIFT PADDLE™

INSTRUCTIONS

Congratulations on your purchase of the Power-Pole® Drift Paddle.

To add the Power-Pole Drift Paddle follow these simple step by step instructions.

NOTE: Once the Drift Paddle has been installed on your Power-Pole anchor be sure to rotate the paddle to 90° when running on the water or trailering on the highway to reduce wind resistance and reduce risk of damage to your Power-Pole.

Step 1 Install the mounting stirrup

Remove the 2, 1/4" bolts from the knuckle of the Power-Pole. **FIG. 1**

Step 2 Attach the Drift Paddle Stirrup mount to the knuckle using the supplied hardware. This hardware needs to go in the correct order to ensure the stirrup mount does not damage the knuckle or vice versa. **FIG. 2**

Proper hardware order:

- Flat Washer **A**
- Stirrup Mount **B**
- Plastic Spacer **C**

Slide the bolt through the knuckle then repeat for the other side.

NOTE: There are two sizes of Plastic Spacer (C) supplied. The longer spacer should be used with all Power-Pole Blade installations. The shorter spacer should be used with all other Power-Pole models.

Tighten the bolts down until they are snug, there is no need to over-tighten bolts.

NOTE: Once the Drift Paddle Stirrup has been mounted to the knuckle the Drift Paddle can be attached and removed at the dock or on the water. The stirrup should remain mounted to the Power-Pole knuckle.

Step 3 Attaching the Drift Paddle

Install the appropriate size rubber slip on spike attachment to the spike (Figure 3A) and attach drift paddle to it (Figure 3B)

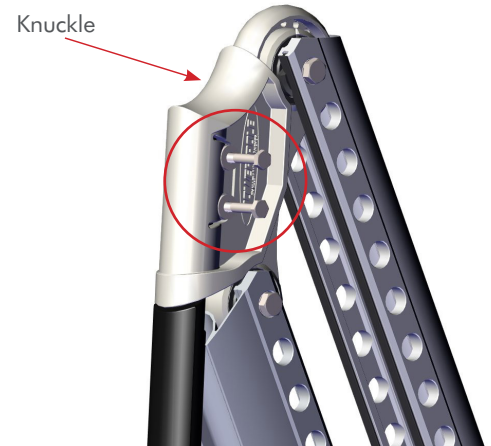


Figure 1

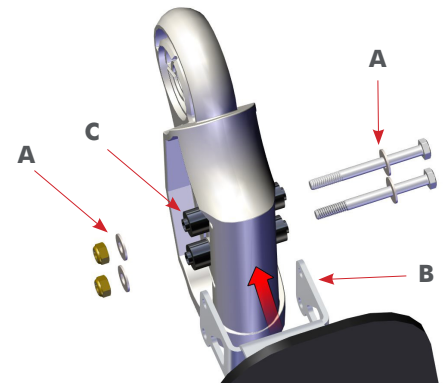


Figure 2

NOTE: Remove the rubber slip-on attachments from the spike if the drift paddle is removed for an extended period of time.

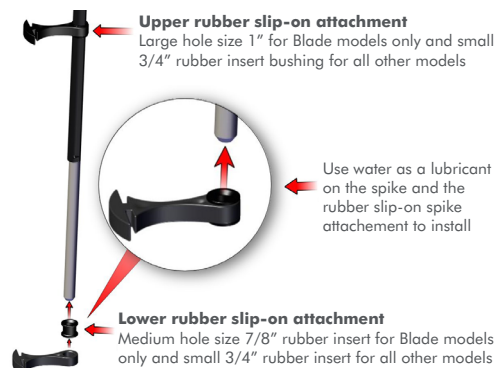


Figure 3A



Figure 3B

Hardware missing? Need help? Contact our Technical Support Team at **1 + 813.689.9932 Option 2**





SWIFT. SILENT. SECURE.

DRIFT PADDLE™

INSTRUCTIONS (continued)

- Step 4** Align the upper mount of the paddle with the stirrup mount on the knuckle. Pull up the snap-lock pin and line it up with the center locking position hole on the stirrup mount. **FIG. 4**
- Step 5** Once the snap-lock pin on the upper mount is in the center locking hole, line up the center hole on the upper mount with the top hole of the stirrup mount. Now slide the quick release pin through the holes. **FIG. 5**
- Step 6** Be sure the quick release pin goes all the way through the stirrup mount. **FIG. 6**
- Step 7** The Drift Paddle should now be securely mounted to the Power-Pole **FIG. 7**



Figure 4

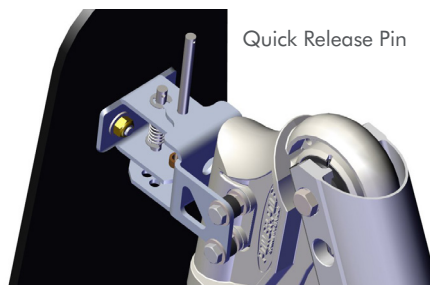


Figure 5

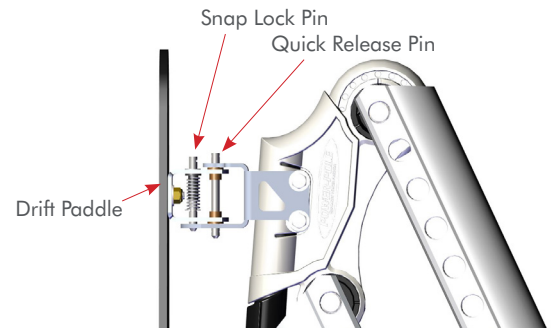


Figure 6



Figure 7



Now using the snap-lock pin you can rotate the Drift Paddle a full 180° in 30° increments.

Product Quality Assurance

JL Marine Systems, Inc. assures that this product is made with the finest quality materials and is free from manufacturer defects. Please inspect this product immediately prior to installation. If defects are apparent, please contact JL Marine Systems, Inc. Warranty Department at 813-689-9932 immediately.

Please read all instructions carefully for proper product installation. JL Marine Systems, Inc. is not responsible for improper installation of product.

To activate your warranty or find a Power-Pole Certified Warranty Center, go to www.power-pole.com



Hardware missing? Need help? Contact our Technical Support Team at **1 + 813.689.9932 Option 2**



9010 Palm River Road, Tampa, Florida 33619 phone 813.689.9932 • fax 813.689.8883 • power-pole.com
©2017 all rights reserved. Power-Pole Shallow Water Anchor U.S. Patent No. 6,041,730