



SWIFT. SILENT. SECURE.

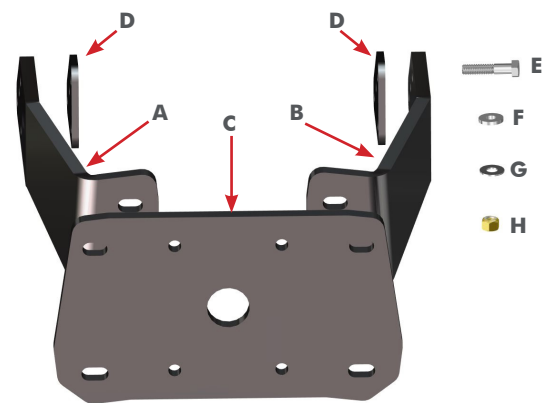
PONTOON M-BRACE MOUNTING BRACKET INSTRUCTIONS

Hardware Kits:

- A.** (1) Port Side Arm
- B.** (1) Starboard Side Arm
- C.** (1) Center Plate
- D.** (2) Backer Plates
- E.** (12) 3/8" x 1-3/4" Bolts
- F.** (8) 3/8" Flat Thunder Washers
- G.** (16) Flat Thin Washers
- H.** (12) 3/8" Lock Nuts

Installation Tools:

- 9/16" Socket with ratchet
- 9/16" Wrench
- Center Punch
- Drill
- Steel Drill Bits 1/4" & 7/16"
- Tape
- Marker



STEP 1 Hold drill template to the mounting surface and mark hole locations. Do this for both sides. **FIG. 1**
Check all clearances.

STEP 2 Put the mounting bracket together as illustrated **FIG. 2** (Do not fully tighten yet). Re-check clearances with loosely assembled bracket.

STEP 3 Drill holes in pontoon mounting surface using template to guide **FIG. 3**

- Use a center punch to mark the center of hole locations.
- Drill first with a 1/4" drill bit
- Finish the hole with a 7/16" drill bit

STEP 4 Repeat step 3 for the opposite side of pontoon M brace/frame rail.

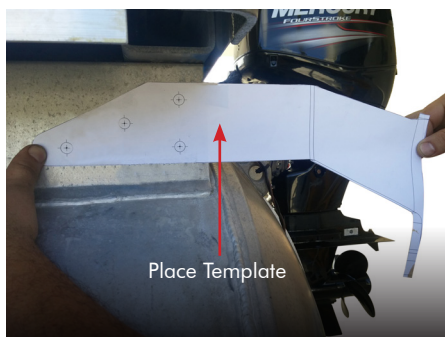


Figure 1

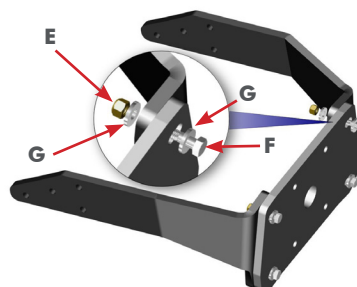


Figure 2

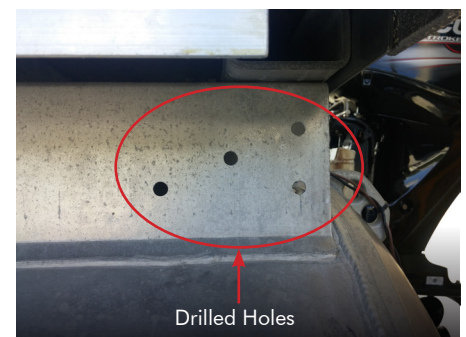


Figure 3

Need help? Contact our Technical Support Team at **1 + 813.689.9932 Option 2**



©2018 all rights reserved. Power-Pole Shallow Water Anchor U.S. Patent No. 6,041,730



SWIFT. SILENT. SECURE.

PONTOON M-BRACE MOUNTING BRACKET INSTRUCTIONS (continued)

STEP 5 Bolt the adapter plate to pontoon. Be sure to install the backer plates on the inside of the pontoon mounting surface. Tighten the bolts that hold the Center Arm to the Port and Starboard Arms last. **FIG. 4, 5 & 6.**

IMPORTANT: If M-Brace is covered, it will need to be cut to install backer plates. See **M-Brace Cuts** section at bottom of page.

STEP 6 Install the Power-Pole shallow water anchor by following the Hardware Kit for Adapter Plate Instructions.

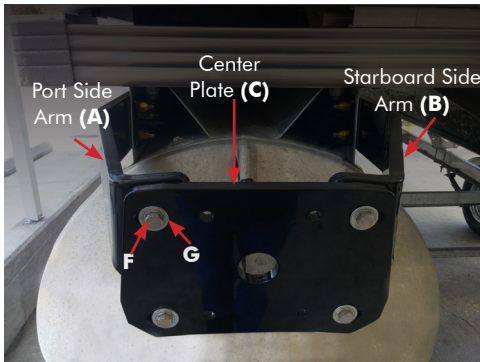


Figure 4

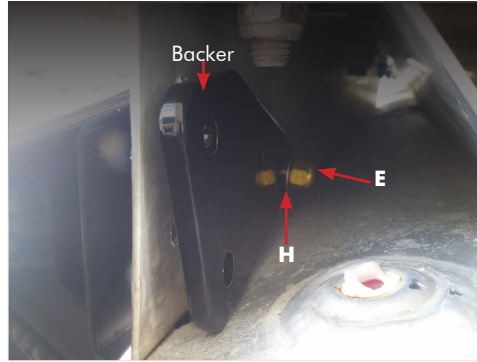


Figure 5

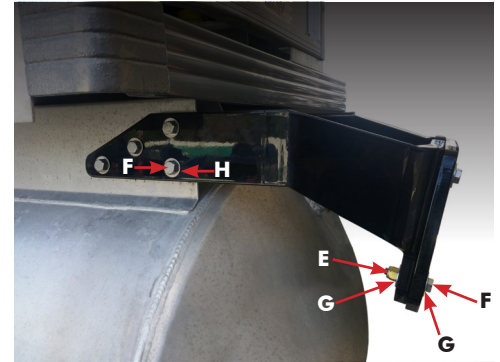


Figure 6

M-Brace Cuts

- WARNINGS:**
- Check with boat manufacturer to ensure the warranty will not be voided when cutting to install the M-Brace Pontoon Bracket.
 - Check before cutting to ensure there are no hoses or wires behind the M-Brace.

If the back of the M-Brace is covered, a hole may need to be cut to fit the backer plates (**D**) behind the pontoon mounting surface. Follow accompanying diagrams for cutting suggestions **Fig. 7-A & 7-B.**

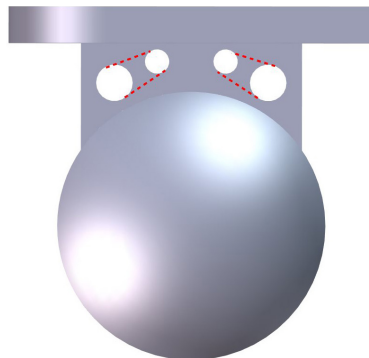


Figure 7-A

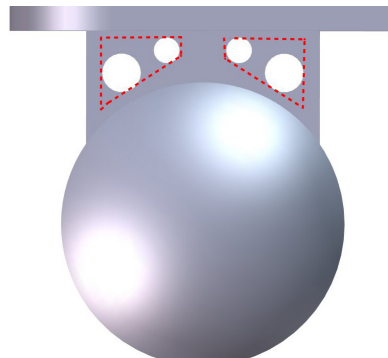


Figure 7-B

Need help? Contact our Technical Support Team at **1 + 813.689.9932 Option 2**