



SWIFT. SILENT. SECURE.

## ADAPTER WEDGE 22 DEGREE KIT (white or black) INSTRUCTIONS

### Hardware:

- A** (1) Adapter Wedge 22 Degree
- B** (4) 1 1/2" x 1 1/2" Shims
- C** (2) 5/16" x 6" Bolts
- D** (2) 5/16" x 5" Bolts

### Installation Tools:

- 1/2" Socket with Ratchet
- 1/2" Wrench
- Drill
- 5/16" Drill Bit
- Pencil
- Marine Grade Sealant

**NOTE:** This adapter wedge has a angle of 22 degrees for mounting a Power-Pole to negative or positive degree angled transoms.

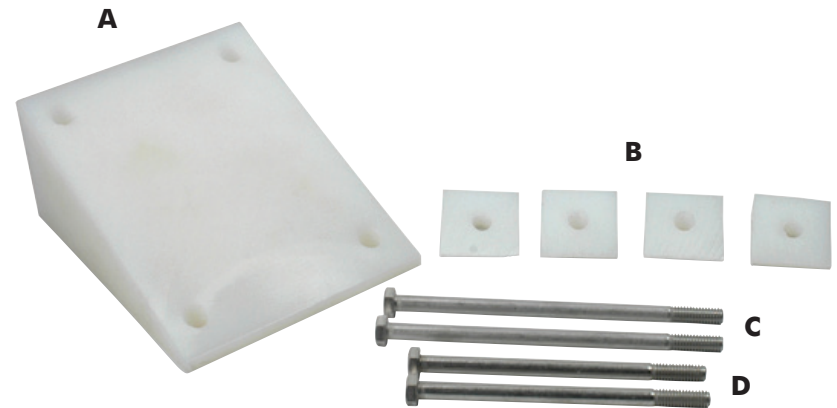


SWIFT. SILENT. SECURE.

### Product Quality Assurance

JL Marine Systems, Inc. assures that this product is made with the finest quality materials and is free from manufacturer defects. Please inspect this product immediately prior to installation. If defects are apparent, please contact JL Marine Systems, Inc. Warranty Department at 813-689-9932 immediately.

Please read all instructions carefully for proper product installation. JL Marine Systems, Inc. is not responsible for improper installation of product.



**NOTE:** JL Marine Systems, Inc. recommends that adapter plates be installed by an authorized Power-Pole® dealer. To find a dealer near you go to **power-pole.com**



9010 Palm River Road, Tampa, Florida 33619  
phone 813.689.9932 fax 813.689.8883 • power-pole.com  
©2018 all rights reserved. Power-Pole Shallow Water Anchor U.S. Patent No. 6,041,730

Hardware missing? Need help? Contact our  
Technical Support Team at **1 + 813.689.9932 Option 2**

## Installation Instructions

### Step 1. Choosing a transom mount location

1. Place a straight edge on the bottom of the hull directly below and centered from the desired mounting location. The lowest point of the Power-Pole shallow water anchor will need to be at least 4" above this straight edge Fig A-1. If the Power-Pole shallow water anchor is mounted lower than the 4" minimum the vessel may experience adverse handling effects.

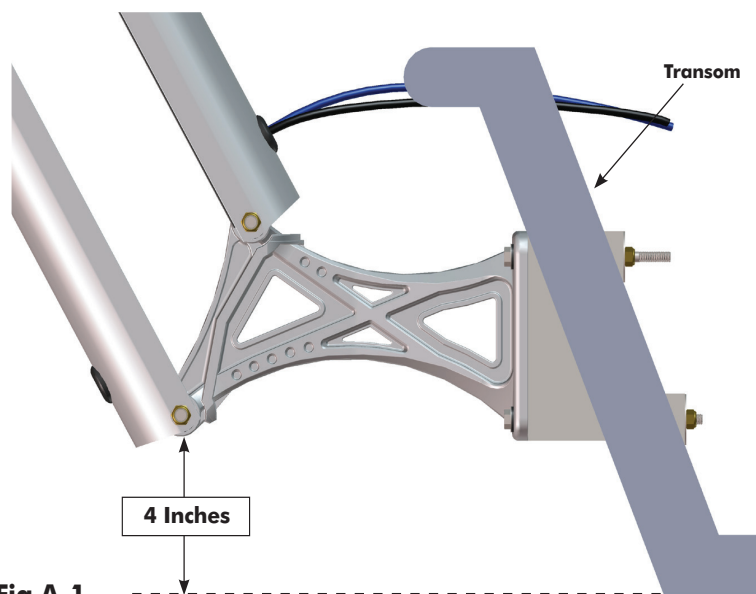


Fig A-1

#### Clearance:

1. If the vessel is equipped with trim tabs make sure the Power-Pole® shallow water anchor will not interfere with the actuators or the tabs themselves.

**NOTE:** If the vessel is equipped with 9" or less trim tabs the standard 4" minimum mounting height will clear the tab. If the tabs are larger than 9" the Power-Pole® anchor will need to be mounted higher to prevent interference.

2. Turn and tilt the outboard motor all the way in the direction of the Power-Pole® anchor. Move the Power-Pole® anchor and outboard motor through their entire range of motion to verify clearance.

## Installation Instructions

### Step 2 Mounting the Power-Pole shallow water anchor

**IMPORTANT:** Carefully inspect and confirm your desired mounting location BEFORE mounting the adapter plate.

1. Double check the clearance for adequate space on the inside of the transom mounting area to make sure that the bolts will not have any obstructions. Also, be sure that you will have plenty of room to tighten the nuts on the inside.
2. Once the mounting location has been selected, place the stern bracket against the transom and mark the mounting holes.
3. Carefully drill the marked holes with a 5/16" drill bit ensuring clearance on the inside of the transom.
4. Once all of the holes have been marked and drilled use a marine grade sealant between the 22 degree wedge and the hull as well as around the bolts and holes.
5. Fasten the stern bracket to the transom using the listed hardware below **FIG. A-2**. The (4) Neo-bond washers (**H**), (4) 5/16" Fender washers (**I**) and (4) 5/16" tall Brass lock nuts (**E**) are provided with the Power-Pole hardware. The rubber backed neo-bond washers are to protect the powder coated surface of the stern bracket. Do Not Overtighten.

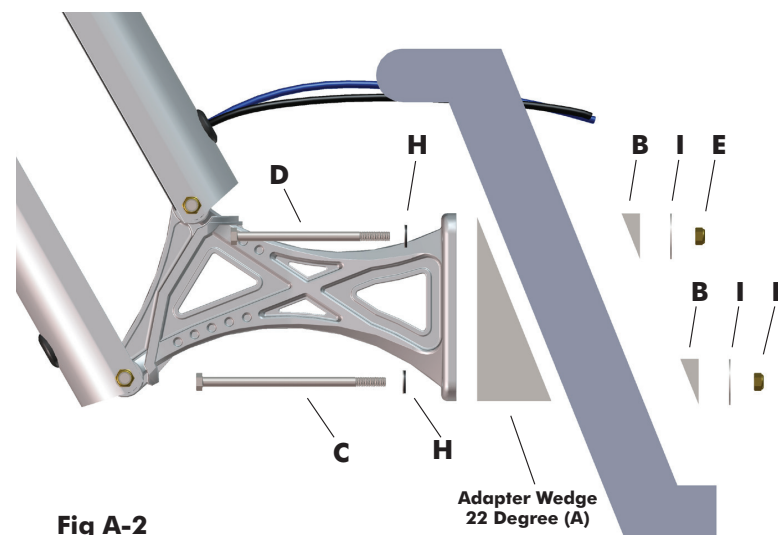


Fig A-2