



SWIFT. SILENT. SECURE.



UNBRACED UNIVERSAL
ADAPTER PLATE BOLT SET

INSTALLATION GUIDE

UNBRACED ADAPTER PLATE BOLT SET

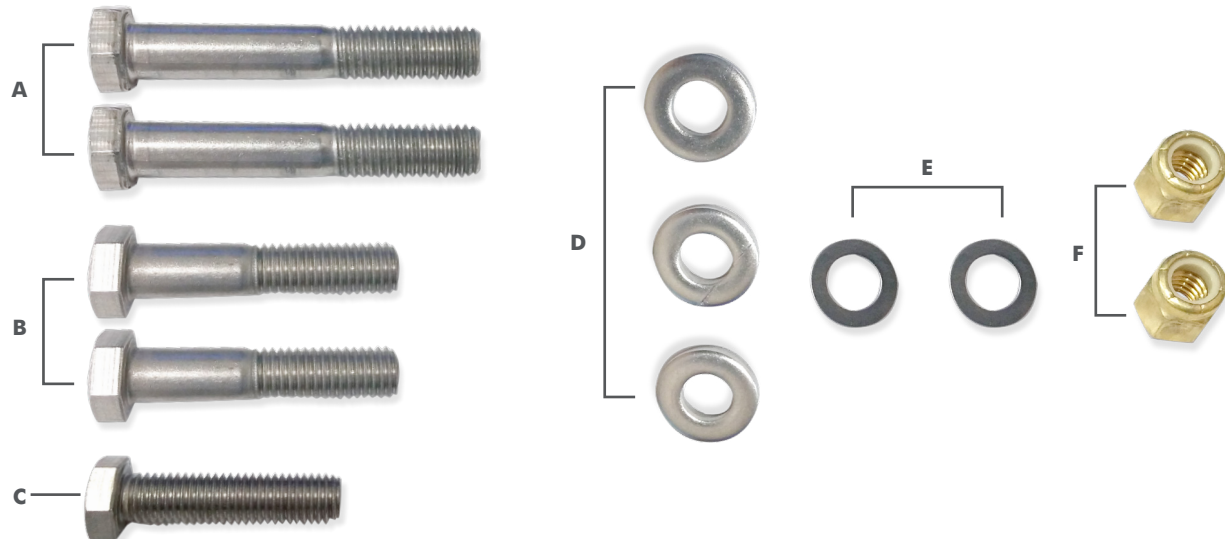
INSTRUCTIONS

Hardware (Included) :

- A.** (2) 1/2" x 3-1/4" Bolts
- B.** (2) 1/2" x 2-1/2" Bolts
- C.** (1) 1/2" x 2" Bolt
- D.** (3) 1/2" Heavy Flat Washers
- E.** (2) 1/2" Thin Washers
- F.** (2) 1/2" Nylon Lock Nuts

Installation Tools:

- 3/4" Socket
- 3/4" Wrench
- Ratchet
- Torque Wrench



Pre-Installation Notes: Read Before Install

Locate your jack plate model and follow mounting diagram to install the Adapter Plate.

Check Adapter Plate for a **"P"** for port or **"S"** for starboard mount.

Check for clearance issues when installing. Plate height may be adjusted using the slots on Adapter Plates.

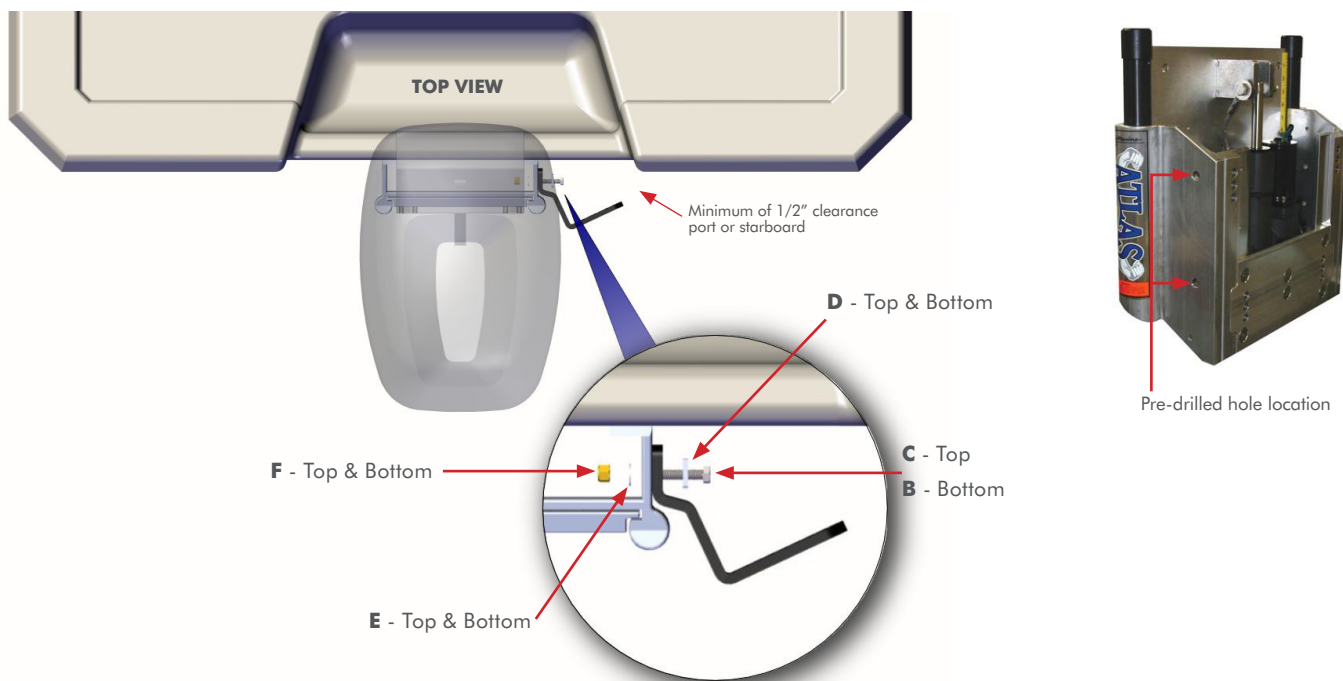
If no pre-drilled holes exist on the Jack Plate, locate the matching template in the back of this guide.

Before drilling, check inside the Jack Plate for any obstructions or clearance issues of Hardware to be installed.

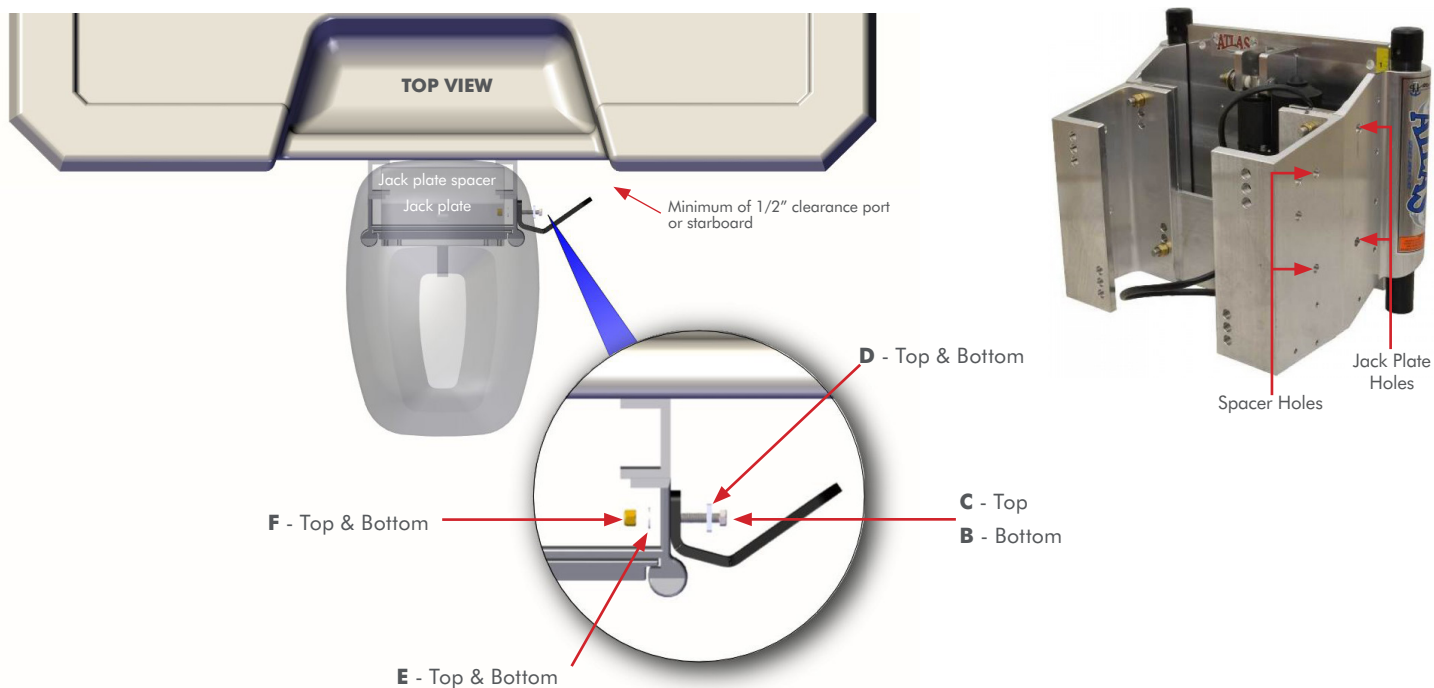
Tighten all Hardware to 960 inch pounds/80 foot pounds of torque.

Need help? Contact our Customer Service Team at **1 + 813.689.9932 Option 2**

T-H MARINE ATLAS JACK PLATE 4" & 6"



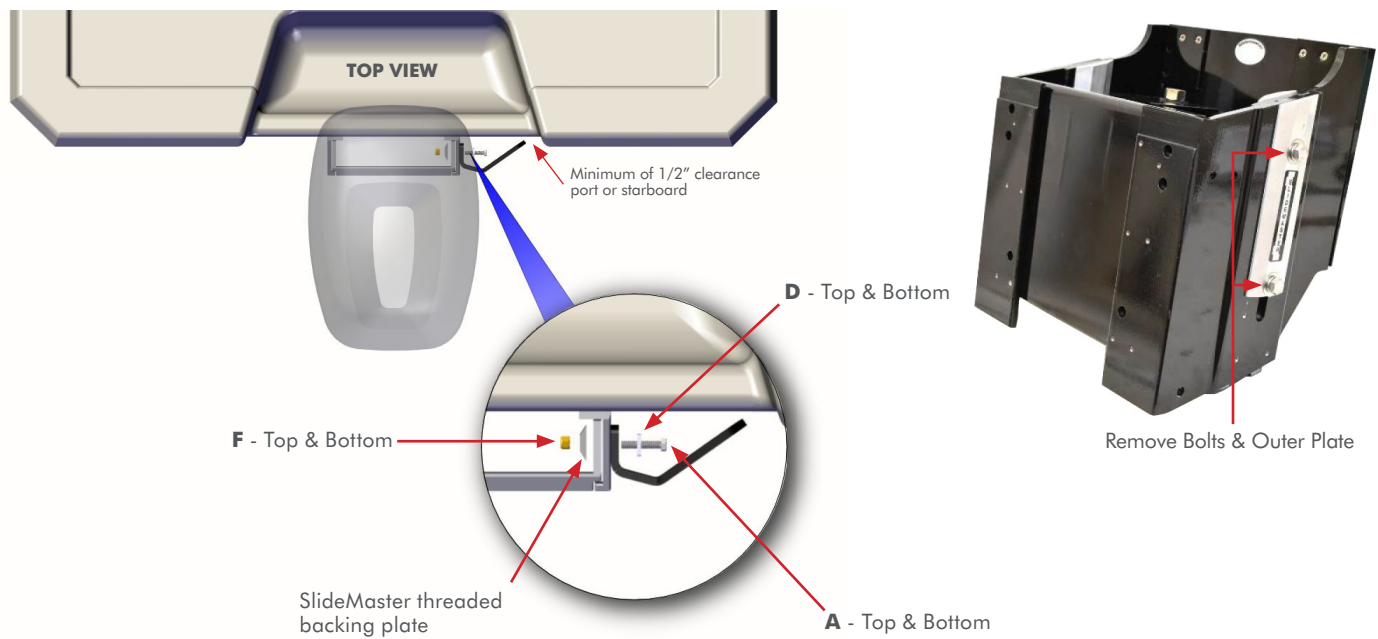
T-H MARINE ATLAS JACK PLATE 8", 10", & 12"



NOTE: Choose the set of mounting holes that allow for proper clearance (either **Spacer** or **Jack Plate**).

Need help? Contact our Customer Service Team at **1 + 813.689.9932 Option 2**

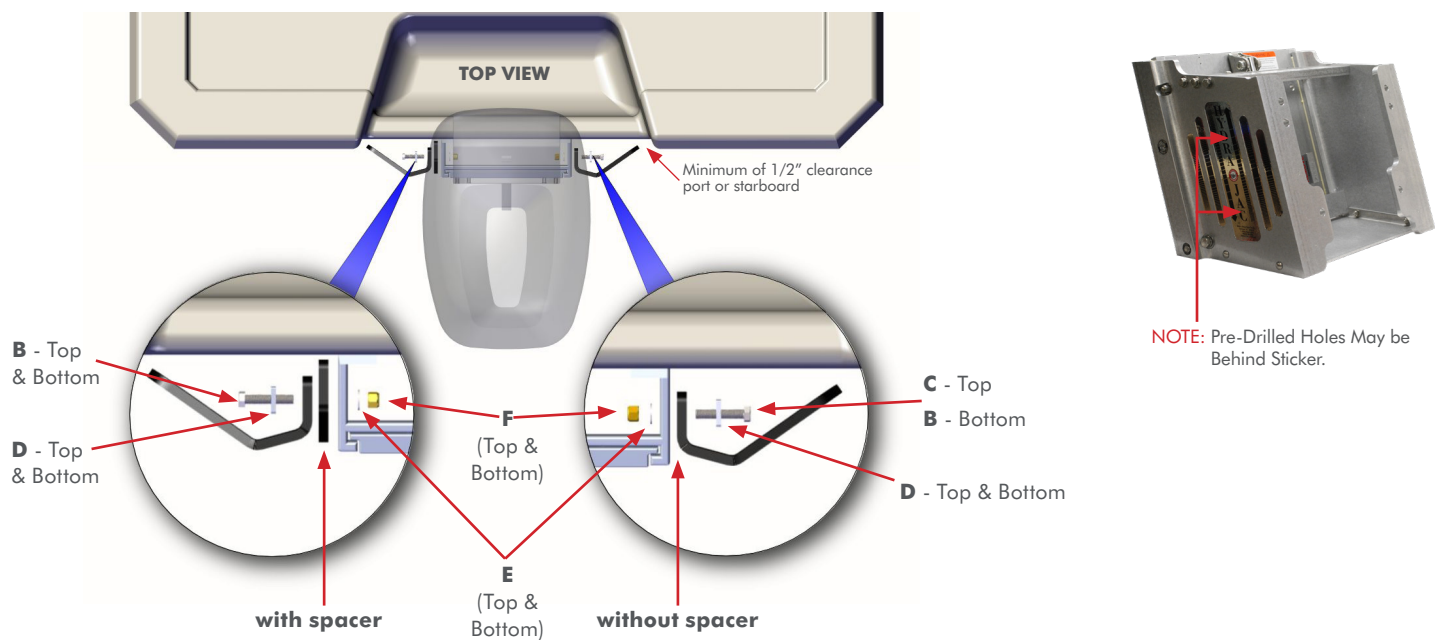
R&R SLIDEMASTER JACK PLATE



IMPORTANT: Properly support the Outboard Motor according to guidelines in your engine's owner's manual.

NOTE: For dual installation, completely install each Adapter Plate one side at a time.

Bob's Machine Shop (BMS) Jack Plate – All Sizes

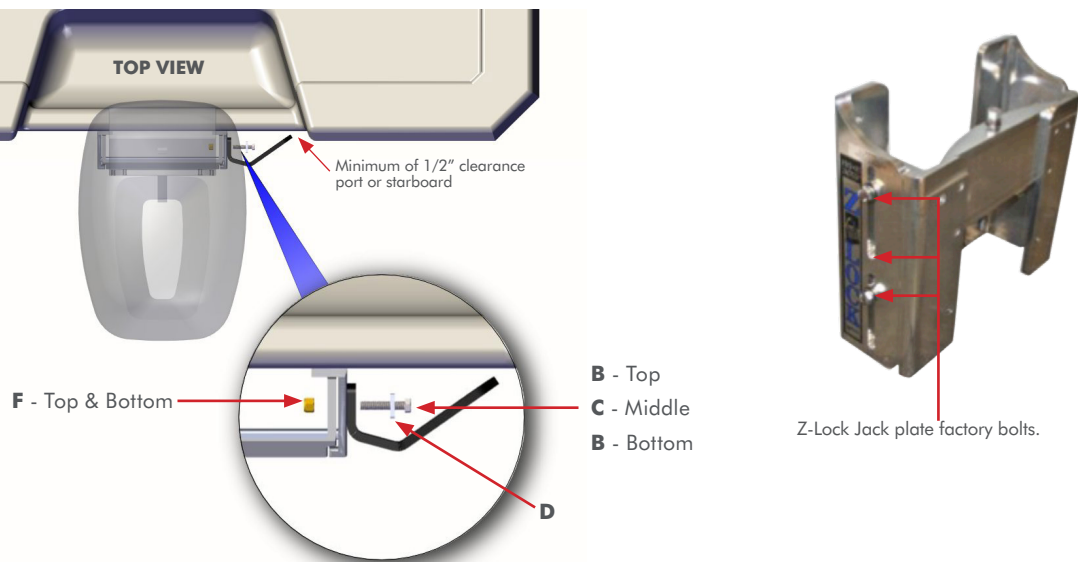


NOTES: Some BMS plates may require an additional Spacer. To order, call JL Marine Systems, Inc. at **1 (813)-689-9932 Opt. 2.**

IMPORTANT! For some models, the Spacer will **SPAN, NOT FIT INTO** the recessed area.

Need help? Contact our Customer Service Team at **1 + 813.689.9932 Option 2**

T-H Marine Z-Lock™ Manual Jack Plate



IMPORTANT: Properly support the outboard motor according to guidelines in your engine's owner's manual.

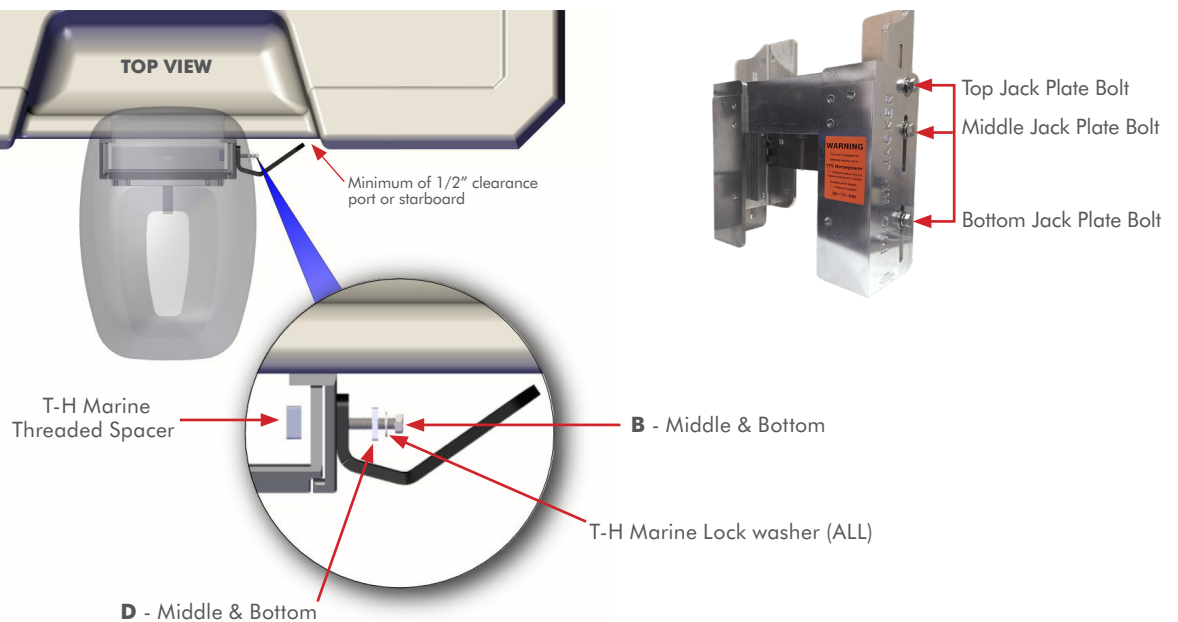
STEP 1: Remove Lock Nuts on the inside of the Jack Plate.

STEP 2: Remove the Bolts on the outside of the Jack Plate where the Side-Mount Adapter Plate will be installed.

NOTES:

- The Z-Lock has two Bolts in the top mounting slot. **Both** bolts need to be installed through the Adapter Plate.
- For dual installation, completely install each Adapter Plate one side at a time.

T-H Marine Pro Hi-Jacker™ Manual HP



IMPORTANT: Properly support the Outboard Motor according to guidelines in your engine's owner's manual.

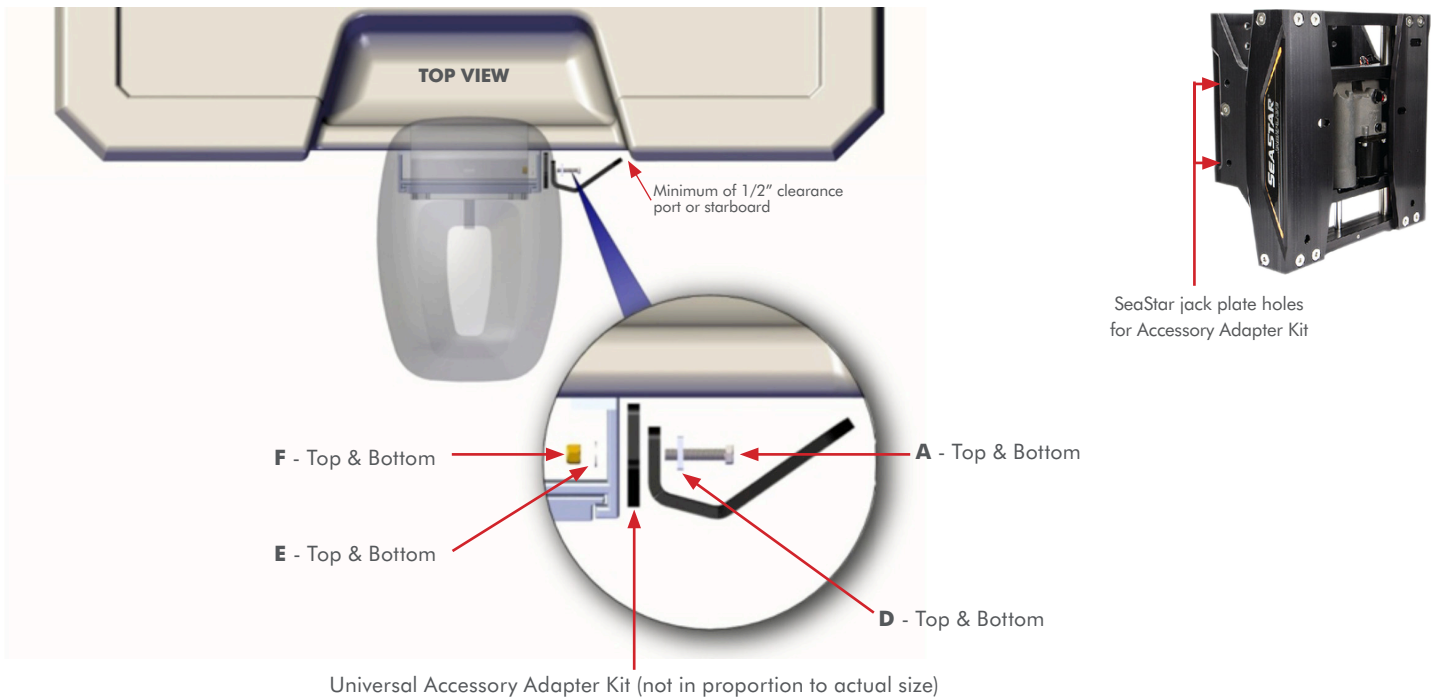
NOTE: For dual installation, completely install each Adapter Plate one side at a time.

STEP 1: Remove the Lock Nuts on the inside of the Jack Plate.

STEP 2: Remove the **middle** and **bottom** Bolts on the outside of the Jack Plate where the Side Mount Adapter Plate will be installed.

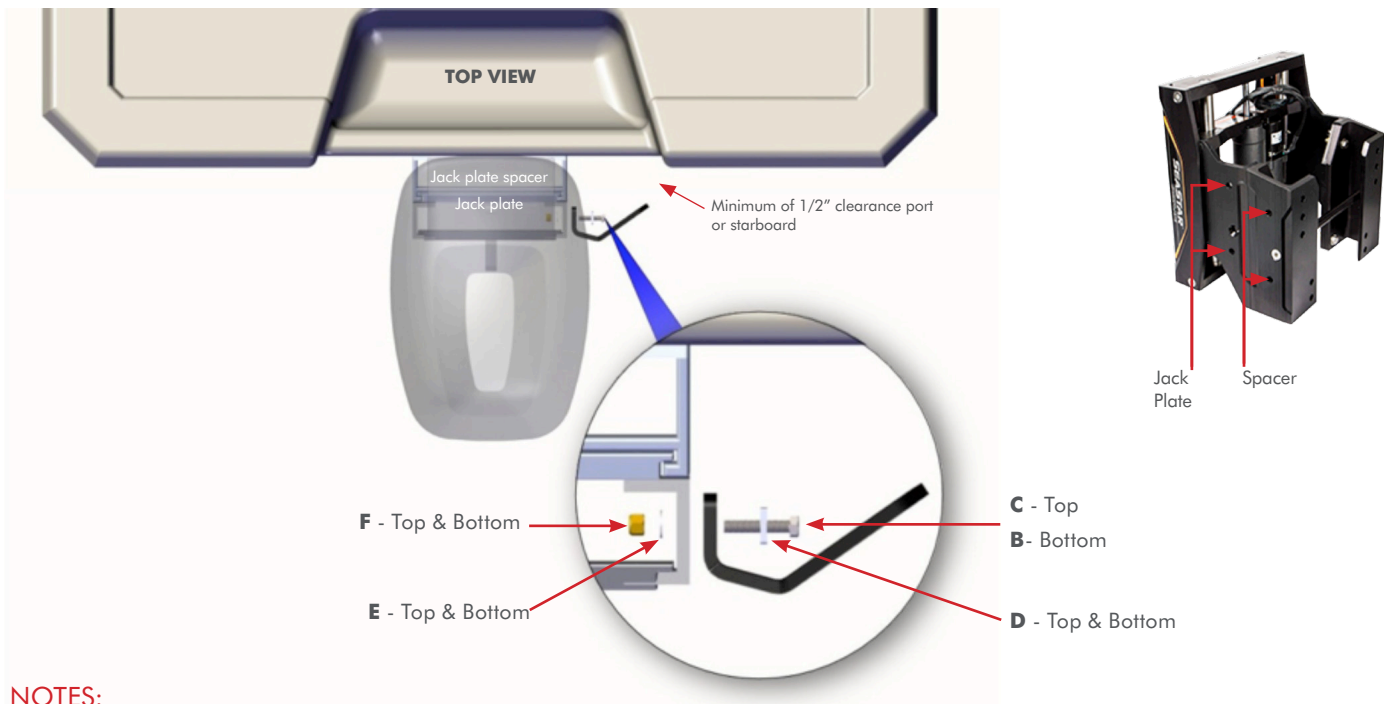
Need help? Contact our Customer Service Team at **1 + 813.689.9932 Option 2**

SeaStar 6" (3rd Generation)



IMPORTANT: Accessory Adapter Kit is required to mount Side Mount Adapter Plates to a SeaStar 6" jack plate. To order, call JL Marine Systems, Inc. at **1 (813) 689-9932 Opt. 2.**

SeaStar 8", 10", & 12" (3rd Generation)



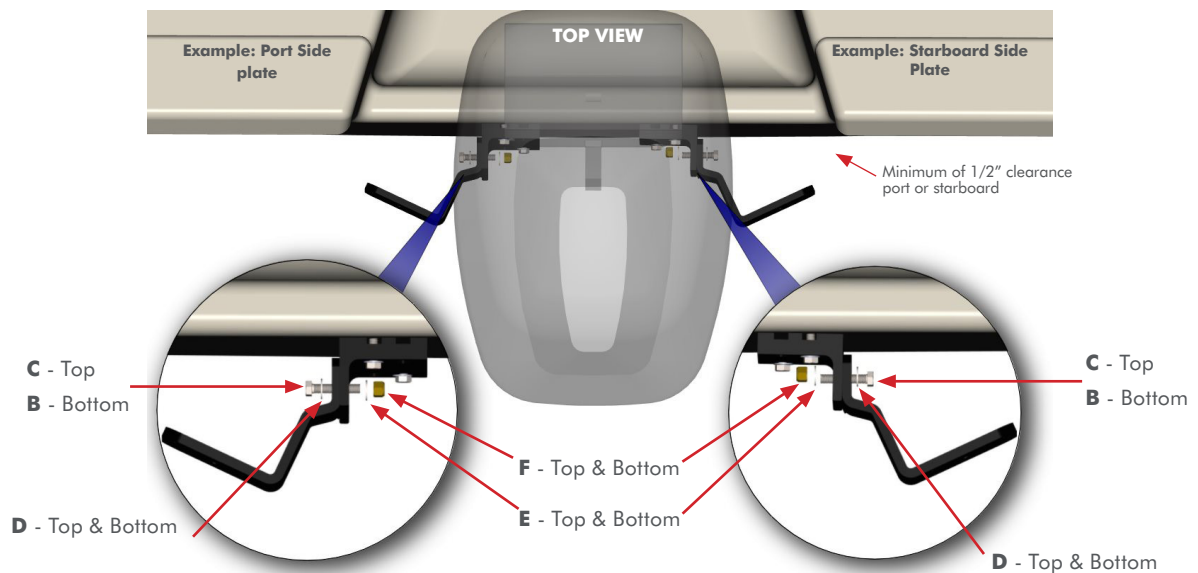
NOTES:

- 10" models may require an additional SeaStar spacer kit. To order, call JL Marine Systems, Inc. at **1 (813)-689-9932 Opt. 2.**
- Determine if mounting to the **Spacer** or **Jack Plate** depending on clearance requirement.

Need help? Contact our Customer Service Team at **1 + 813.689.9932 Option 2**

Motor to Side (M to S) Mount Without Jack Plate (Including Verado Plates)

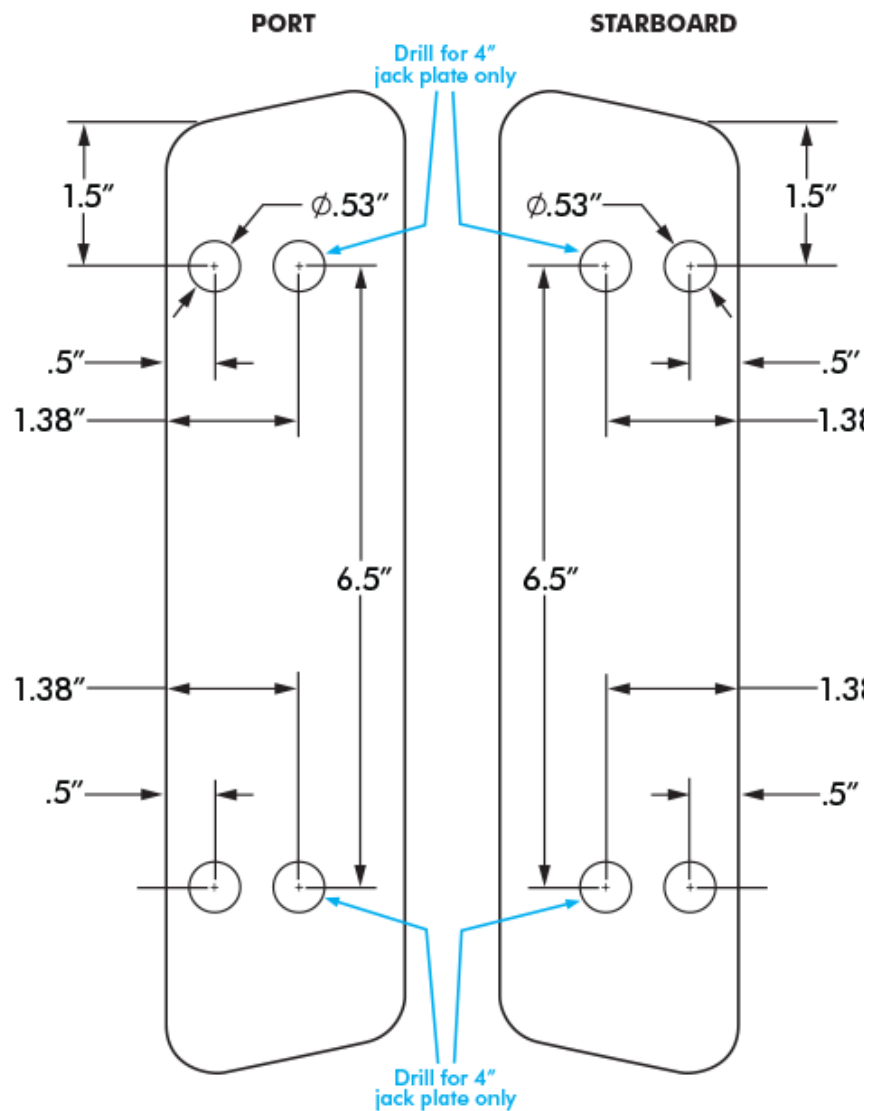
NOTE: When not using a jack plate, M to S adapter plates are required for all side mount adapter plate. To order, call JL Marine Systems, Inc. at **1 (813)-689-9932 Opt. 2.**



Need help? Contact our Customer Service Team at **1 + 813.689.9932 Option 2**

Drill Measurement Guide (Bob's Machine Shop)

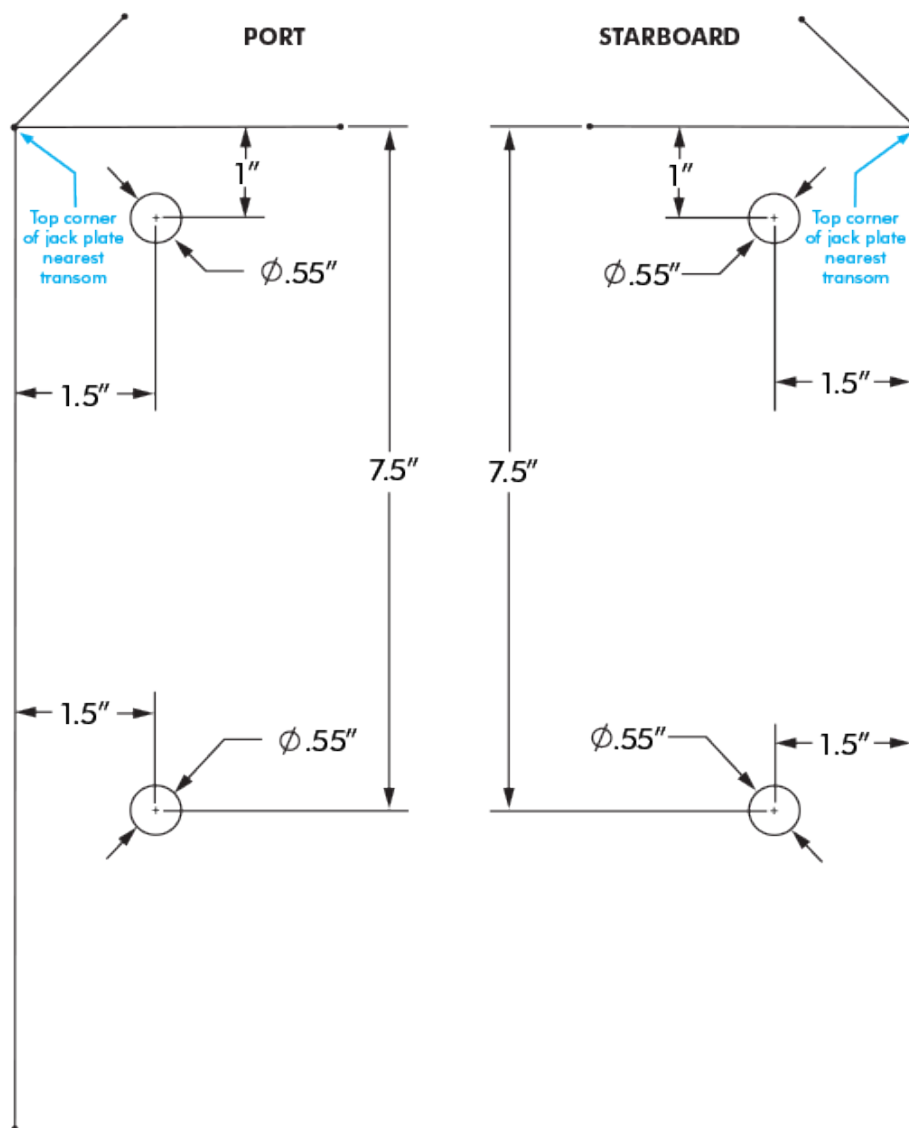
Bob's Machine Shop side drilling measurement guide
NOT ACTUAL SIZE. FOR MEASUREMENT PURPOSES ONLY.



Need help? Contact our Customer Service Team at **1 + 813.689.9932 Option 2**

Drill Measurement Guide (Atlas Jack Plate)

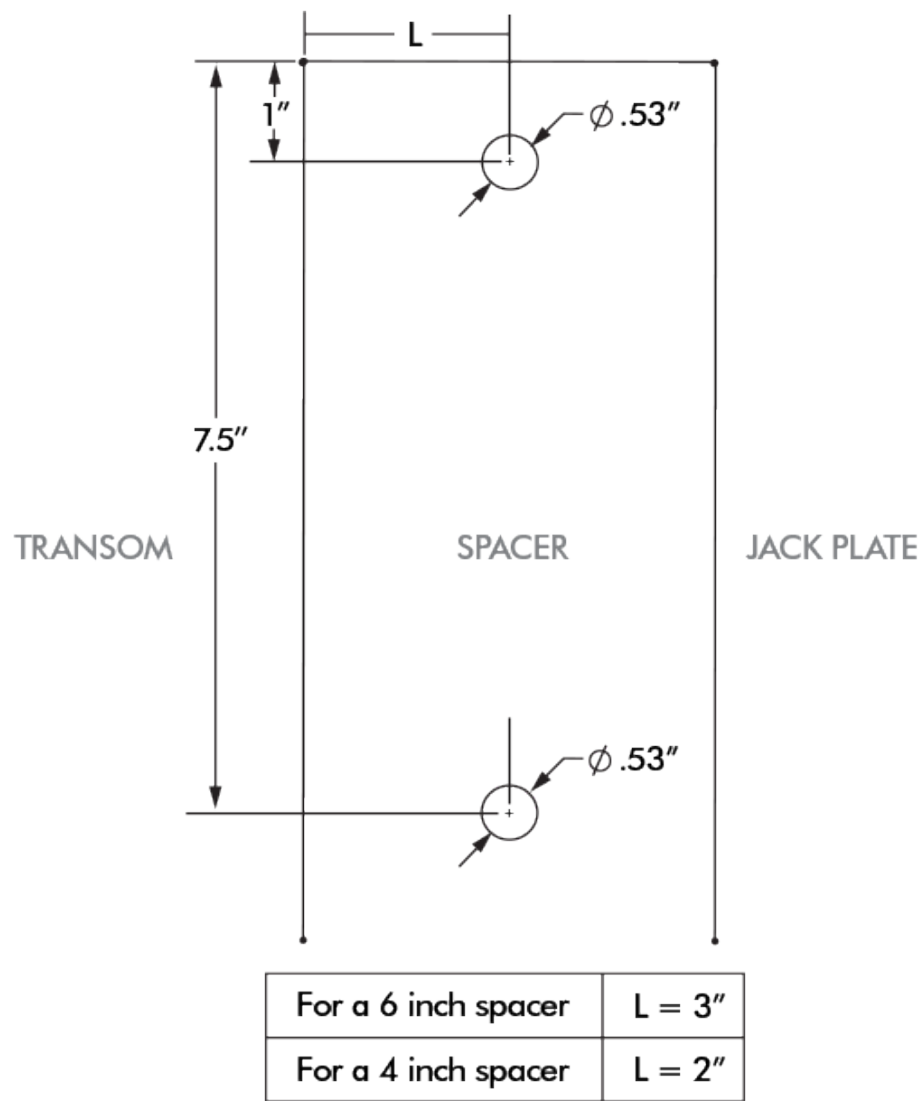
Atlas jack plate drilling measurement guide
NOT ACTUAL SIZE. FOR MEASUREMENT PURPOSES ONLY.



Need help? Contact our Customer Service Team at **1 + 813.689.9932 Option 2**

Drill Measurement Guide (Atlas Spacer Plate)

Atlas spacer plate measurement guide
NOT ACTUAL SIZE. FOR MEASUREMENT PURPOSES ONLY.



Need help? Contact our Customer Service Team at **1 + 813.689.9932 Option 2**

CAUTION:
Do not use the Power-Pole shallow water anchor as your primary anchorage.
Never leave your boat unattended while anchored solely with the Power-Pole shallow water anchor.

US Pat No. 6,041,730

Need help? Contact our Customer Service Team at
1 + 813.689.9932 Option 2



9010 Palm River Road, Tampa, Florida 33619
Phone 813-689-9932 Fax 813-689-8883
www.power-pole.com